



PRINCE ALFRED TERRACE 1B \$3,000

AVAILABLE: Immediately
SQUARE FOOTAGE: 2,027

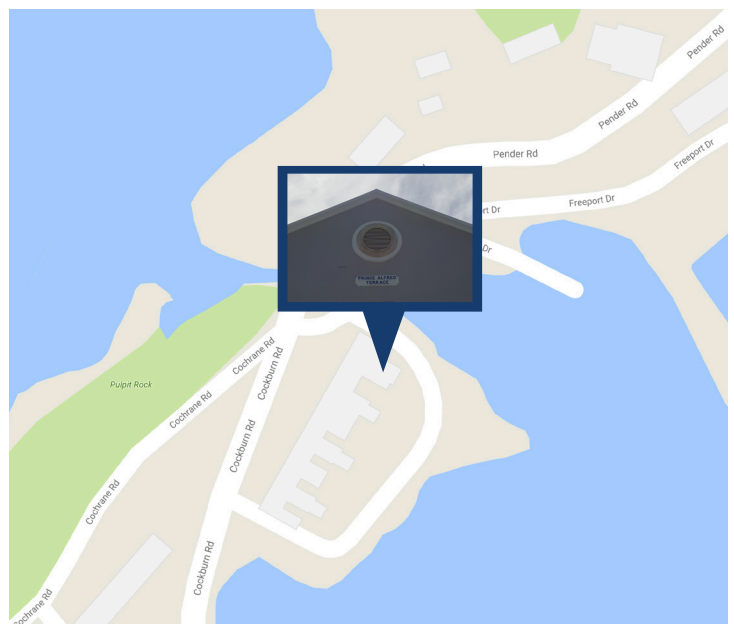
Live a stones throw away from the Royal Naval Dockyard in these beautiful and spacious residential accommodations with storage, modern finishes and majestic water views. Enjoy the daily activities, shopping, restaurants and public transportation on offer nearby in The West End.

Added bonus for all WEDCO tenants, is our 24/7 maintenance support line. We have got you covered!

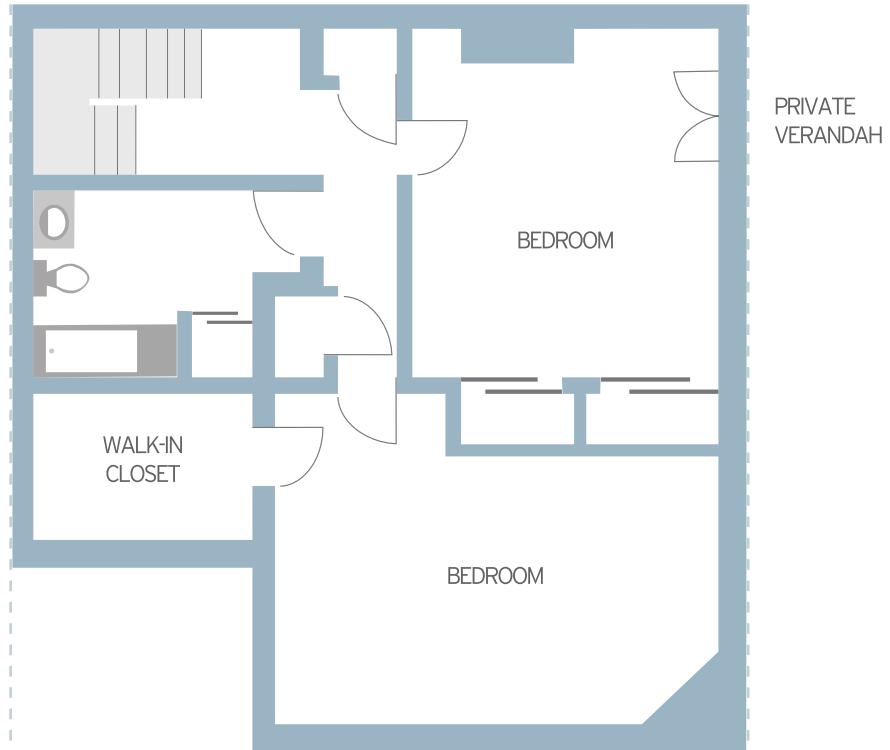
TYPE: Townhouse **FURNISHED:** No **A/C:** Yes
FLOOR: Tile **APPLIANCES:** Major **IEWS:** Yes

ACCOMMODATIONS:	FEATURES:
Bedrooms: 2	- 2 Storey Verandah
Bathrooms: 1.5	- Manicured Garden
Kitchen	- Private Yard
Living Room	- Water Access
Laundry Room	- Water Views
	- Car & Bike Parking

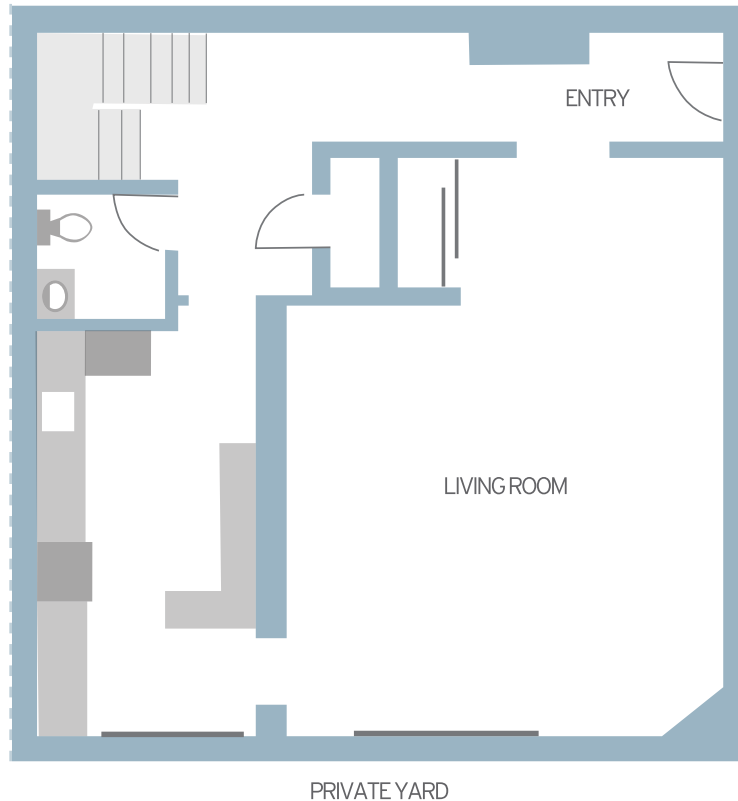
For more information, contact Maria Bento, Property Manager via email at mbento@wedco.bm.



UPPER LEVEL



LOWER LEVEL



* Diagram is not drawn to scale.