



PRINCE ALFRED TERRACE 1A \$3,500

AVAILABLE: Immediately
SQUARE FOOTAGE: 3,270

Live a stones throw away from the Royal Naval Dockyard in these beautiful and spacious residential accommodations with storage, modern finishes and majestic water views. Enjoy the daily activities, shopping, restaurants and public transportation on offer nearby in The West End.

Added bonus for all WEDCO tenants, is our 24/7 maintenance support line. We have got you covered!

TYPE: Townhouse **FURNISHED:** No **A/C:** Yes
FLOOR: Tile **APPLIANCES:** Major **VIEW:** Yes

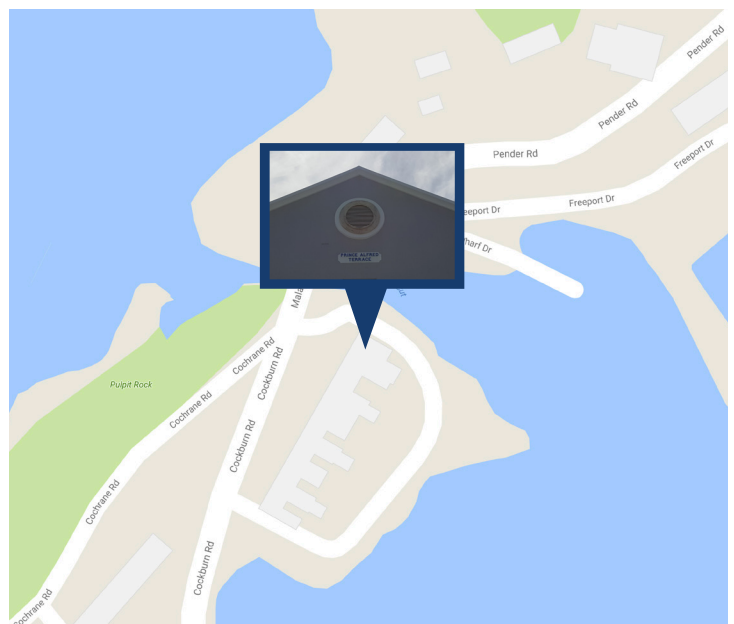
ACCOMMODATIONS:

Bedrooms: 3
Bathrooms: 2.5
Kitchen
Living Room
Dining Room
Laundry Room

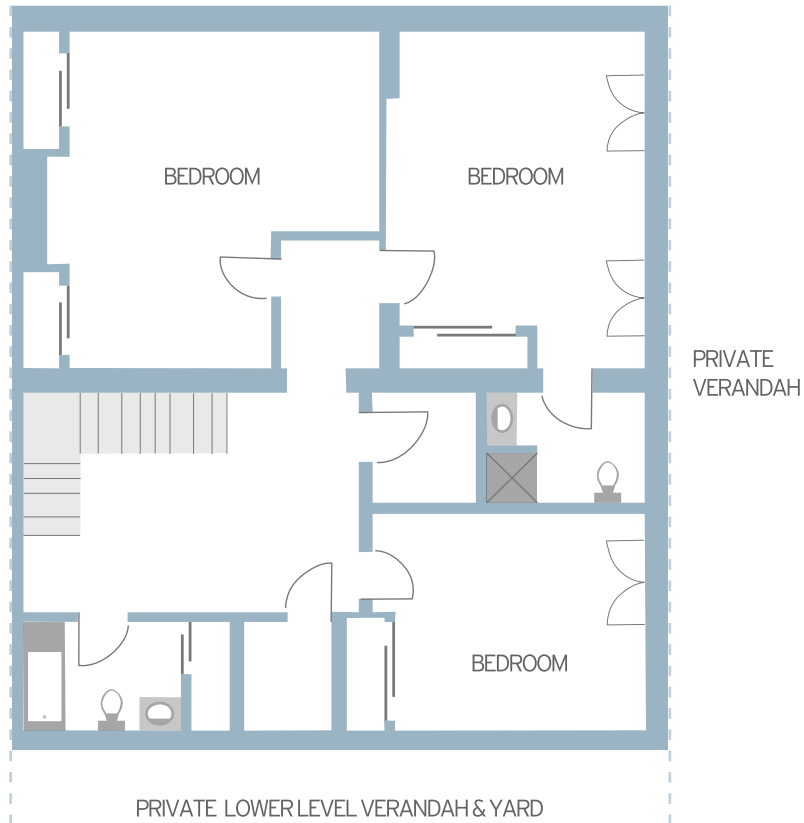
FEATURES:

- 2 Storey Verandah
- Manicured Garden
- Private Yard
- Water Access
- Water Views
- Car & Bike Parking

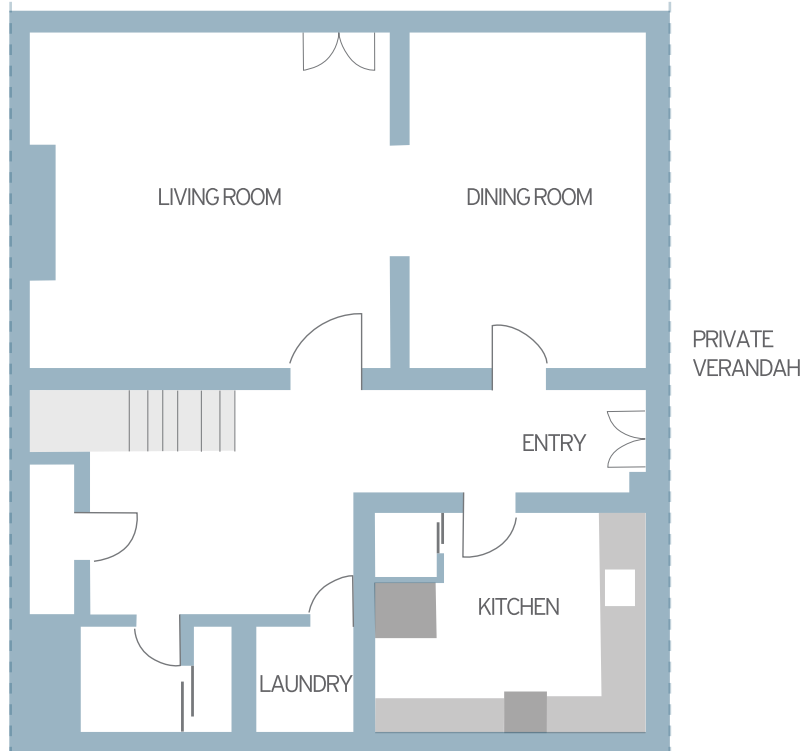
**For more information, contact Maria Bento,
Property Manager via email at mbento@wedco.bm.**



UPPER LEVEL



LOWER LEVEL



* Diagram is not drawn to scale.